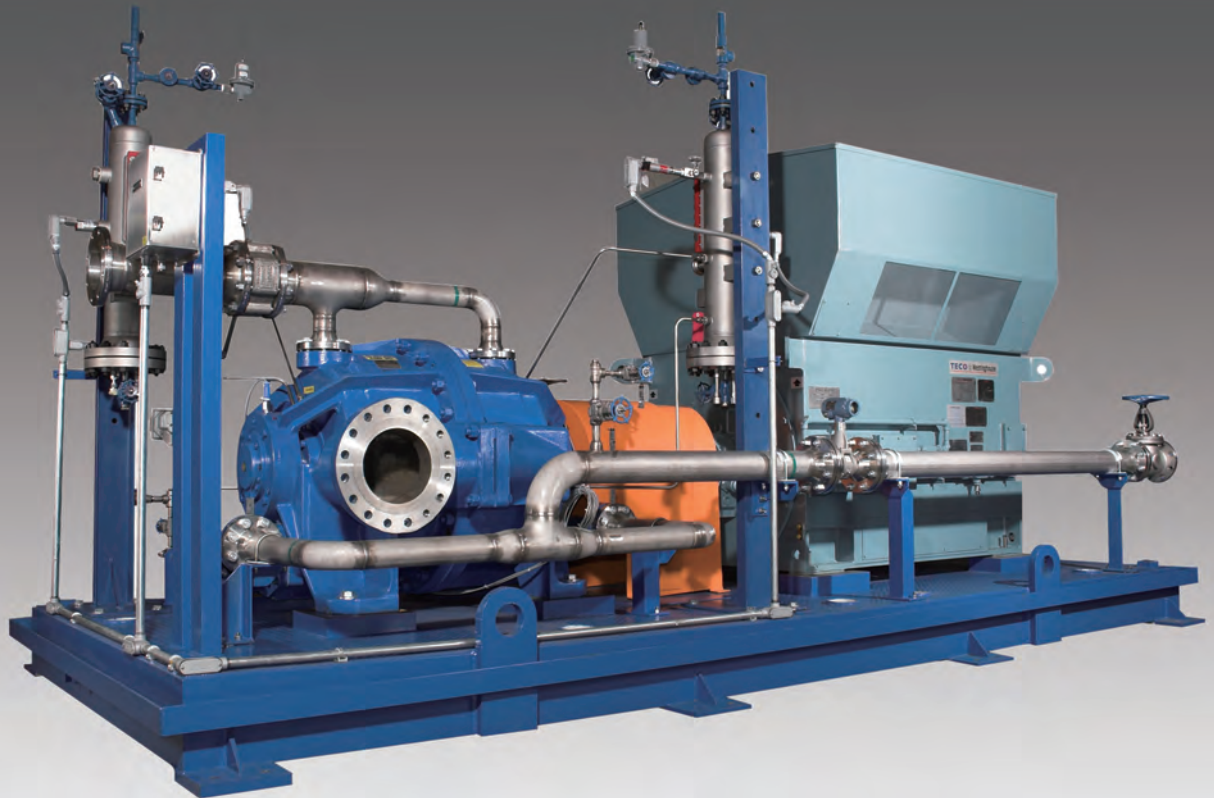


全球最大的单级液环压缩机-HP9
The World Largest Single Liquid Ring Compressor-HP9

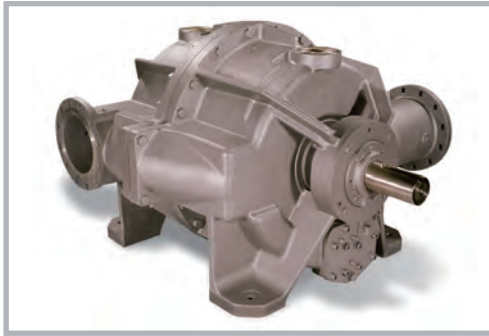


NASH HP9 液环压缩机

NASH HP9 Liquid Ring Compressors

NASH单级液环压缩机HP9 — 完全符合API681标准

NASH Single Stage Liquid Ring Compressor HP9 – Fully compliance with API 681



倍缔纳士可以为客户提供可靠、高质量液环压缩机，满足不同应用场合，无论是火炬气回收，VCM回收，还是其他含蒸汽、腐蚀性、脏或者爆炸性气体，依靠百年的经验，NASH都可以提供正确的解决方案。

众所周知，NASH液环压缩机属于维护点非常少，维护成本非常低廉；而且，NASH液环压缩机效率较高，能耗和运营成本低。

NASH provided its customers with reliable, quality liquid ring compressor with the features and performance necessary for all demanding applications, whether it is flare gas compression, VCM, recovery or any other type of wet, corrosive, dirty or explosive gas, the NASH product range can provided the right solution with more than 100 years of experience.

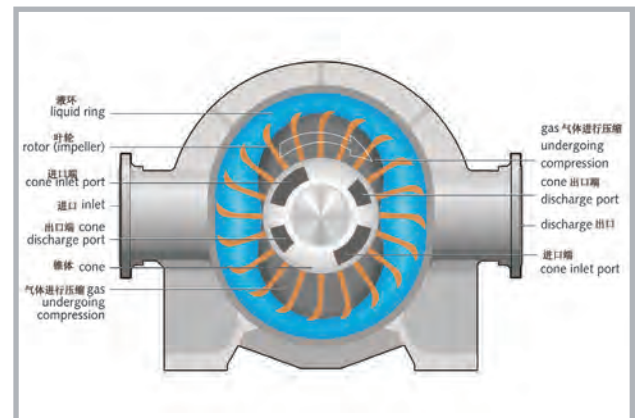
NASH Liquid Ring Compressors require minimal care and are known for an extremely low need for maintenance. They reduce power and operating costs by handling higher capacities with less energy.

液环压缩机工作原理

How Liquid Ring Compressor Working Principal

叶轮是NASH液环压缩机唯一的转动部件，旋转的叶轮起到机械压缩机的活塞、旋片、螺杆的相同功能；它的旋转使工作液沿椭圆形的双作用壳体形成液环，每两个叶片与液环之间形成的密封空间随叶轮的旋转，体积不断的增加或者缩小，完成气体的吸入和压缩过程；其双作用的壳体，叶轮每旋转一周可完成吸排气过程各两次。

The balance cast rotor in a NASH liquid ring compressors is its only moving part, Such simplicity is possible because the function of mechanical pistons, vanes, screws, or rotating lobes are performed by the rotating of liquid. Propelled by the rotor and guided by the oval shaped of double-lobe pump body, the compressant or seal liquid almost fills, then almost empties each rotor chamber twice each revolution. This set up the piston action. Inlet and discharge ports in the stationary cone provide flow paths at the inner edges of the rotor chambers.



NASH HP9 液环压缩机

NASH HP9 Liquid Ring Compressors

产品特点介绍

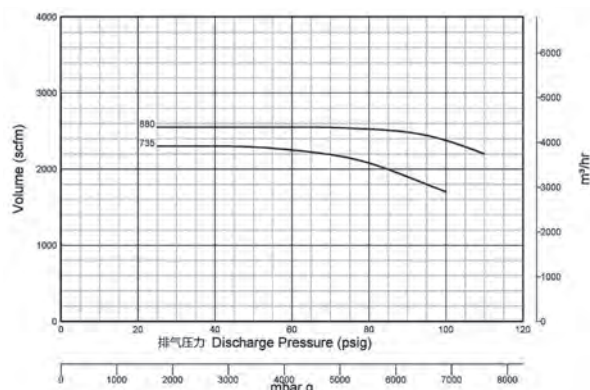
- 完全符合API681标准
- 单级双吸双排结构
- 径向力平衡设计
- 圆锥型分配器，进出通道面积更大，效率更高
- 允许气体中夹带固体颗粒和液体
- 抽气量变化不会对液环压缩机带来任何影响
- 介质摩尔质量的变化对压缩机运行没有任何影响
- 入口压力的波动对压缩机影响也很小，抽气量分配非常容易
- 几乎等温压缩（最大10度温升）
- 结构简单，维护成本低廉；无油压缩：不会污染介质

Feature

- Fully compliance with API681
- Single stage with dual suction and dual discharge construction
- Radial force balanced
- Cone separator with higher capacity and efficiency.
- Not sensitive to carry minimal solid and liquid
- Not sensitive to flow variations
- Not sensitive to changes in molecular weight
- Little sensitive to inlet pressure fluctuations, easy load sharing
- Nearly isothermal compression (Max.Temperature Rising 10 °C)
- Simple design, lower maintenance cost, oil free service.

性能曲线

Performance Curves



NASH HP9单级压缩机基本参数

Basic specifications NASH HP9 (single stage compressor)

吸气量 Suction capacity	3,000 to 4,300 m ³ /h 1,800 to 2,500 CFM
出口压力 Discharge pressure	to 8,5 bar abs. 100 psig
机械密封 Mechanical seals	单端或双端面集装式机械密封 Single, double, cartridge
材质 Construction materials	不锈钢材质，其他材质可选 Stainless steel ; other materials optional

NASH高标准液环压缩机

HP9液环压缩机专门设计应用于有毒、腐蚀性、爆炸性气体，尤其是在石化炼厂和化工厂中的火炬气回收系统有广泛应用，材质设计为316L材质，以及双端面集装式机械密封设计。

NASH liquid ring compressor handle wet, saturated or dirty gases in many industrial application, they can also handle highly toxic, explosive and corrosive seal liquid. Thanks to Sophisticated materials and decades of superior expertise, NASH compressor works in:

- H₂S Removal
- Dry and Wet Chlorine Compression
- Hydrogen Compression
- Hydrocarbon Recovery
- VCM Recovery
- Flare Gas Recovery
- Glycol Recovery
- Biogas Production and many other demanding applications.
- 硫化氢去除
- 干和湿氯气压缩
- 氢气压缩
- 油气回收
- VCM回收
- 火炬气回收
- 乙二醇回收
- 沼气生产和其他应用



HP9 压缩机应用于
锦州石化



NASH其他产品 Other NASH Products

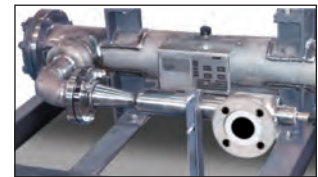
TC/TCM系列

双级液环真空泵，尤其适用于处理大量气液夹带的环境。
吸气量范围170-3,740 m³ /h，极限真空可达到27 mbar。
Integral 2 stage liquid ring pumps with improved performance at vacuum levels down to 0.8" HgA.
Designed to handle large amounts of liquid carryover without difficulty.
Capacity of 170 to 3,740 m³ /h with vacuum to 27 mbar abs.



Steam Jet Ejectors 蒸汽喷射器

尺寸范围从进气口径25毫米到2米；
气量范围从34-34000 m³ /h；
多级系统，压力可低至0.001mm HgA。
Sizes range from 25mm to 2 meters inlets;
Capacities range from 34 to 34,000 m³ /h;
Multi-stage system pressures as low as 0.001 mm HgA.



2BE4/P2620系列

大型液环真空泵，具有抗侵蚀能力；
可采用上排气，从而节省地沟的投资；
自循环密封水设计，节省外供水的水量；
吸气量范围 6,800 - 39,000 m³ /h；极限真空可达200mbar。
Large liquid ring vacuum pumps with superior corrosion resistance;
Top discharge capability which eliminates need for trench;
Self-recirculating seal water, reducing need for external seal water source;
Capacity of 6,800 to 39,000 m³ /h with vacuum to 200 mbar abs.



Vectra系列

液环真空泵/压缩机 (SX, XL, GL) ;
适用于预算充足，设计要求严格的用户；
尤其适用于高背压的工况条件；
吸气量范围34-6,796 m³ /h，极限真空可达到33 mbar。
Liquid ring vacuum pumps and compressors;
Available in feature rich budget designs (SX, XL or GL);
Designed to handle high back pressure requirements;
Capacity of 34 to 6,796 m³ /h with vacuum to 33 mbar abs.



Service服务

我们拥有专业的知识、经验和专家，我们可以提供专业的服务
使您的泵安全运转数十年，服务就在您身边。
We have the know-how, the expertise and the specialists. We
provide professional service to make your pumps run for
decades.



信缔纳士官方微信服务号

Gardner Denver Nash Machinery Ltd.

No.18 Weiwu Rd. Boshan Economic Development
Zone, Shandong Province, PRC, 255213
Tel: 0533-4650168
Fax: 0533-4651466 4650166
http://www.gdnash.com.cn
E-mail: mk.gdnc@gardnerdenver.com

信缔纳士机械有限公司

山东省博山经济技术开发区纬五路18号
邮编: 255213
电话: 0533-4650168
传真: 0533-4651466 4650166
网址: www.gdnash.com.cn
E-mail: mk.gdnc@gardnerdenver.com